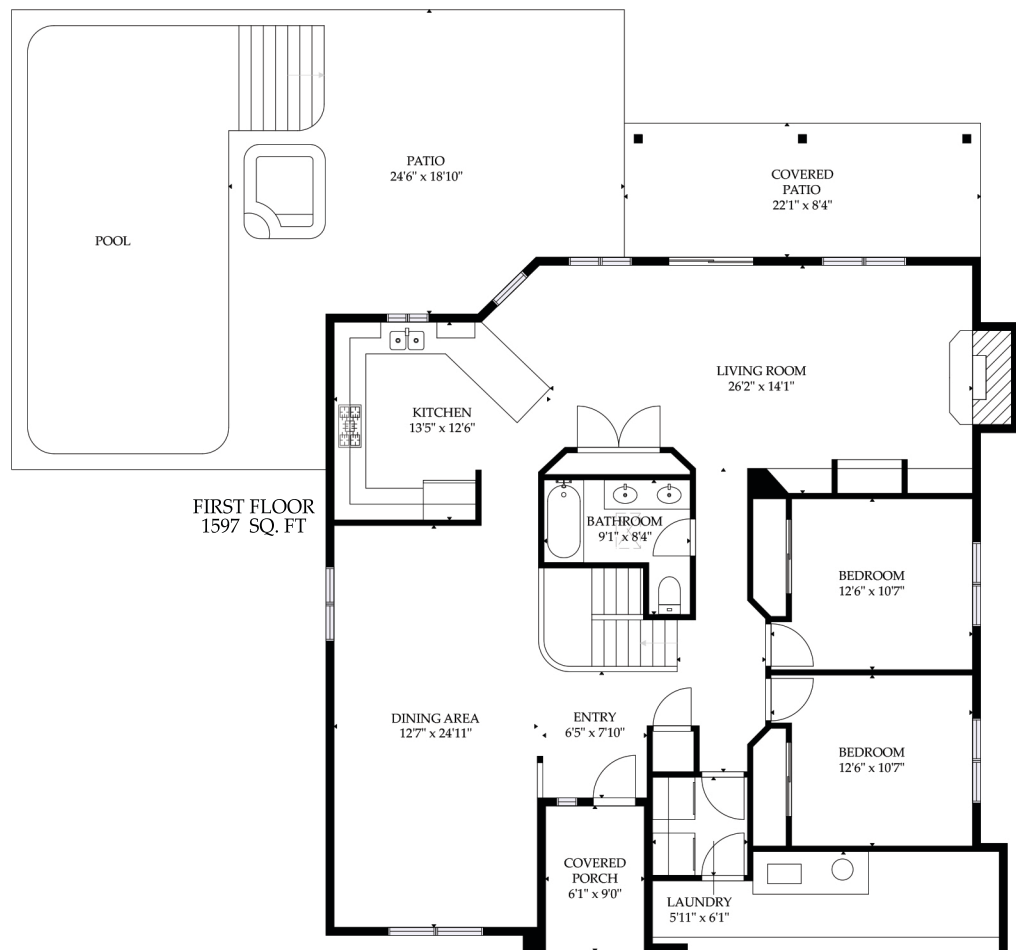
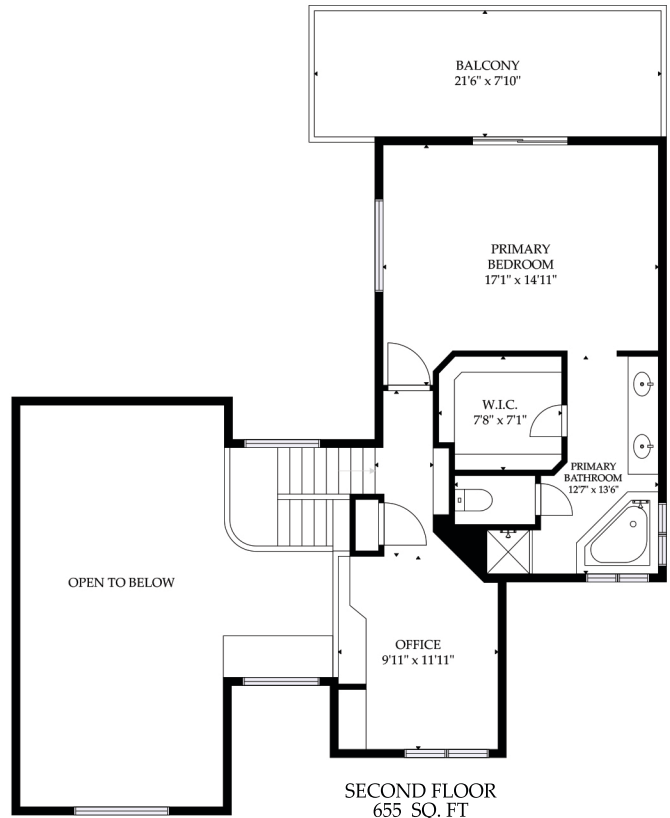


TYLER LOPEZ
520.918.5270 



2711 W. CAMINO DE LA CATERVA

FIRST FLOOR	1,294 SQ.FT
SECOND FLOOR	655 SQ.FT
COVERED PATIO	239 SQ.FT
GARAGE	411 SQ.FT

TOTAL UNDER ROOF 2,902 SQ. FT

ALL DIMENSIONS ARE APPROXIMATE AND SUBJECT TO INDEPENDENT VERIFICATION



GARAGE
19'4" x 21'3"